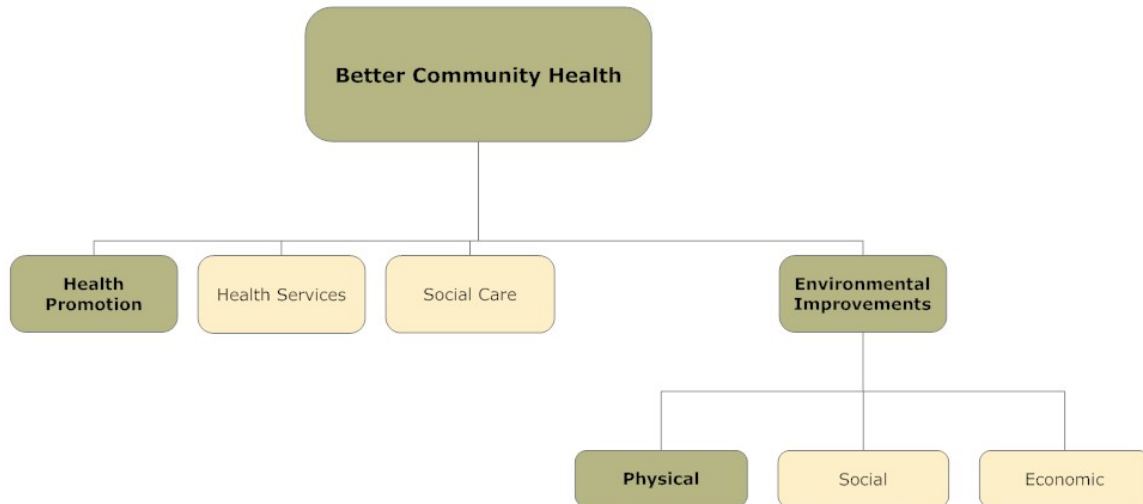


1. Lompoc Valley Community Health Coalition: an ongoing community group committed to working toward a healthier community.

2. Our Focus



Key areas of focus for the Lompoc Valley Community Health Improvement Coalition

3. What is a healthy community?

A community that promotes:

- Clean and safe places to live, work and play
- A strong economy with diverse and well-paying jobs for everyone
- Good schools and opportunities for life-long learning
- Accessible and affordable housing, transportation and health care
- Opportunities to promote, support, and celebrate cultural diversity
- **Broad representation by residents, public/private organizations, and local associations in planning and decision-making to realize the community's goals**
- **Policies (including laws) that promote healthy, strong and successful lives**
- **Engages in effective health promotion strategies**
- **Continuous evaluation of what is going well in the community and what needs to change**

The four items in bold above describe the Lompoc Valley Community Health Improvement Coalition and its tasks

4. Principles of the Lompoc Valley Community Health Improvement Coalition

- Broad definition of health
- Shared vision and values
- Quality of life for all citizens
- Focus on systems change
- Build true collaboration between: business, government, non-profits, and citizens
- Build broad citizen participation that encourages new, diverse players
- Benchmark and measure progress and outcomes
- Build capacity using local assets and resources
- Link existing efforts

5. Process of the Lompoc Valley Community Health Improvement Coalition

- ❖ A collaborative, consensus-based approach to problem-solving that involves a diverse group of citizens from the community
- ❖ An assets-based approach to problem-solving that defines people and relationships by their skills and abilities rather than their needs and deficits
- ❖ Addressing our challenges at a systems level in the community rather than doing another short-term, low-impact project
- ❖ Creating a shared vision for the future that captures our hopes and dreams and guides our collaborative work in the community

6. Proposed Work for the next year

1. Begin to understand the impact of community policy on community health.
2. Understand to what extent health of the community is taken into account as local public policy is created and implemented
3. Assess four key environmental (built environment factors) that affect community health in Lompoc
 - a. walking and biking paths and trails
 - b. neighborhood green space
 - c. safe routes to schools
 - d. access to healthy food options in low income neighborhoods
4. Analyze the assessments and develop draft priorities for action
5. Mobilize key community leaders from diverse sectors of the community to participate in a Community Health Summit in March 2010.
6. Gain consensus on a plan for community health improvement.